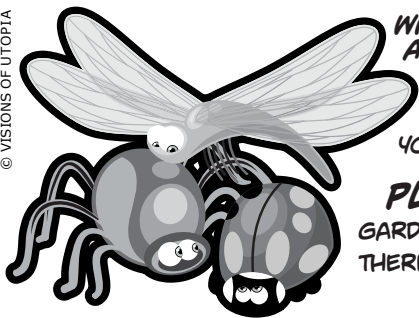


Comic Strip #12

HOW DOES YOUR EDIBLE GARDEN GROW?

growarow.org

© VISIONS OF UTOPIA



WHAT'S BUGGING YOU? RESIST THE URGE TO KILL EVERY BUG THAT APPEARS IN YOUR GARDEN! MOST INSECTS ARE, IN FACT, BENEFICIAL.

WELCOME LADYBUGS, BEES, SPIDERS, DRAGONFLIES AND BUTTERFLIES TO YOUR GARDEN, DIRECTING APHIDS, SLUGS AND SNAILS TO YOUR COMPOST BIN.

PLANT A VARIETY OF DIFFERENT VEGETABLES IN YOUR GARDEN FOR DIVERSITY. PESTS TEND TO CAUSE MOST PROBLEMS WHEN THERE IS A LACK OF DIVERSITY IN THE GARDEN.

PLANT • GROW • SHARE With Those in Need

PLANT A ROW
GROW A ROW
UN RANG POUR
CEUX QUI ONT FAIM

The logo consists of a stylized row of plants of varying heights, with a small figure of a person standing next to them. The text is arranged vertically around the plants.