

# Composting in New Brunswick

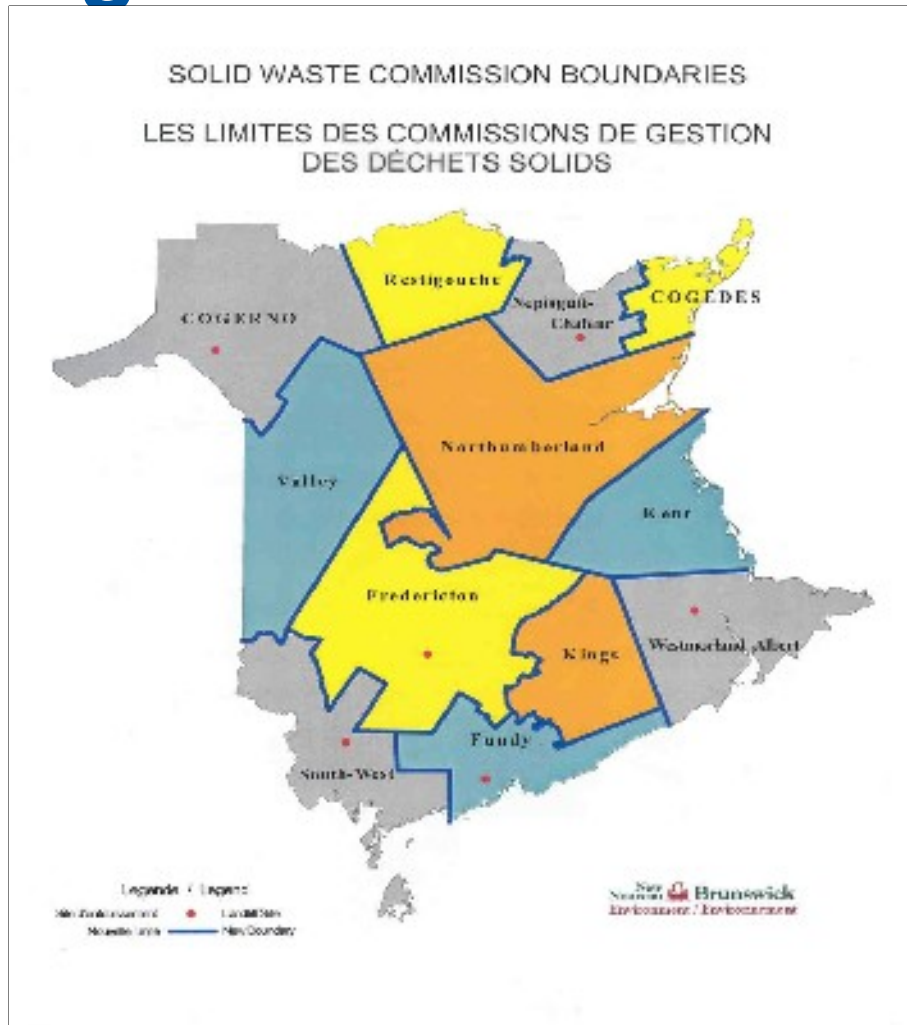
Click to en



# Solid Waste Management in New Brunswick

- 12 Solid Waste Commissions
- All commission led waste diversion programs are voluntary
- 6 commissions operate sanitary landfills
- 5 commissions operate transfer stations

# Regional Solid Waste Commissions



12 Regional Solid  
Waste Commissions

# Commission-led Initiatives

## Organics

Backyard Composting



Curbside Collection



# Why Compost ?

- Large quantities of waste material are diverted from landfills
- Topsoil removal from agricultural and flood land is reduced
- Can be a contingency for large-scale fish and animal mortalities (pandemics)

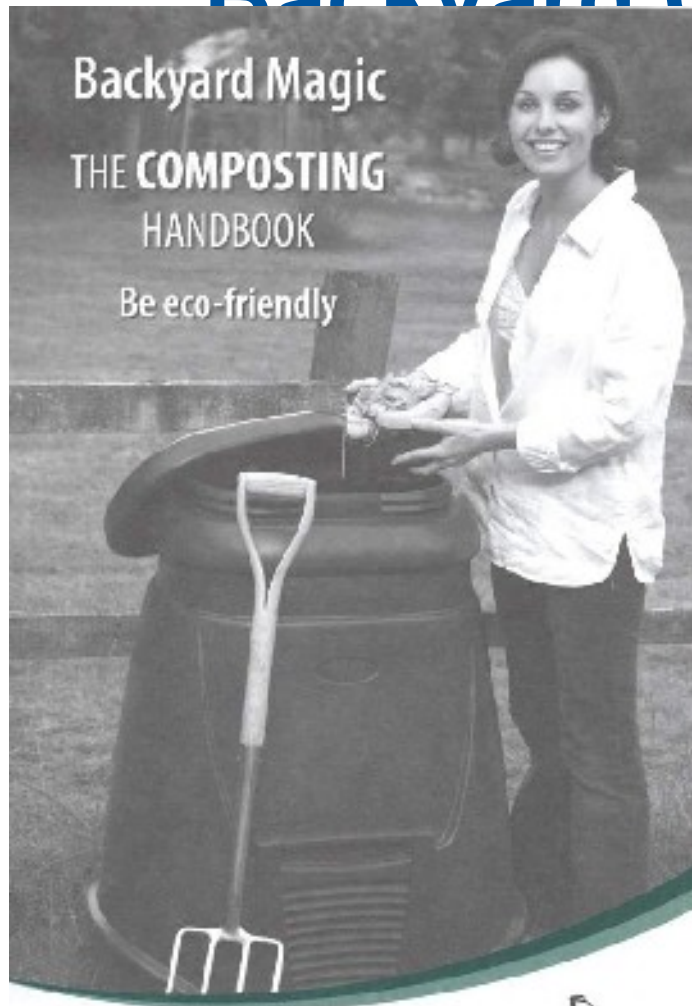
# Why Compost ?

- Value added products are created
- Employment and economic growth
- CO<sub>2</sub> produced from compost is favorable to methane generated from landfills

# Categories of Composting

- Categories of operations
  - Backyard composting
  - On-farm composting (small amounts)
  - Class 11 (human biosolids & municipal waste)
  - Class 12: > 3000 m<sup>3</sup> per year
  - Class 13: < 3000 m<sup>3</sup> per year

# Backyard Composting



[www.gnb.ca](http://www.gnb.ca)

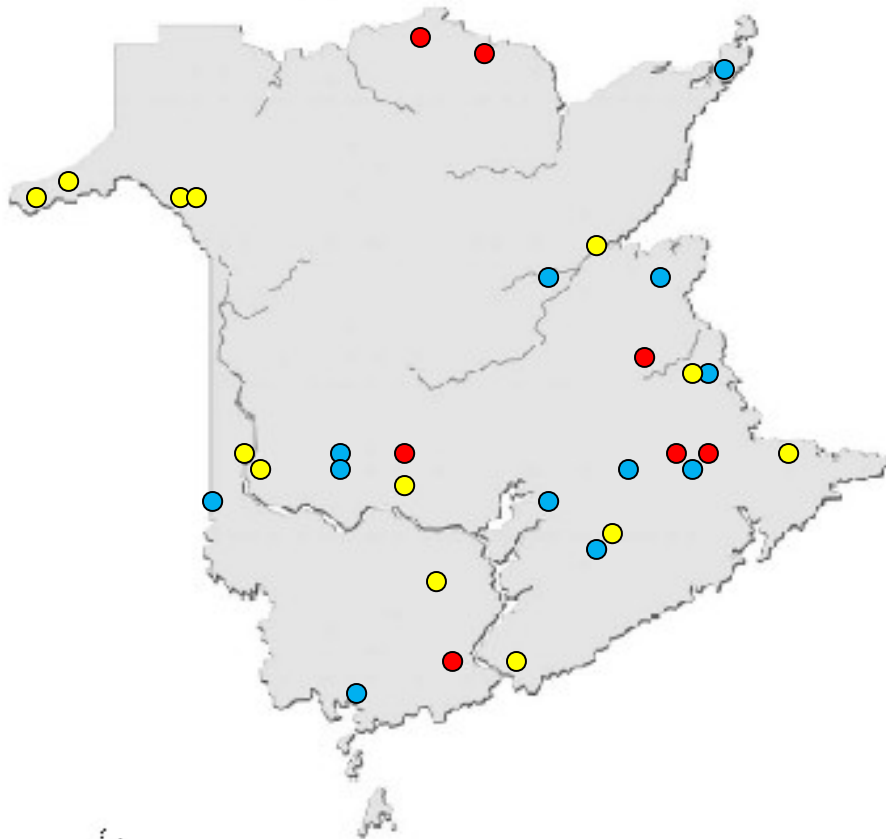
search: composting

New Brunswick  
Nouveau Brunswick

New Brunswick  
Nouveau Brunswick  
Be...in this place • Être...ici on le peut

# Composting Approvals

# Compost Facilities



- Class 11
- Class 12 (> 3000 m3)
- Class 13 (< 3000 m3)

# Requirements for Composting Facilities

- Guideline for the Site Selection, Operation and Approval of Composting Facilities in NB.
- New Guideline (draft)
  - Performance based
  - Class 11 & 12 require P.Eng.

# Setbacks for Composting Facilities

- Old Guideline

	All Classes
Dwelling	300 m
Commercial / Industrial Buildings	150 m
Farms	50 m
Roads	30 m
Rivers / Streams	100 m
Lake	100 m
Well	150 m
Adjacent Property	30 m

# Setbacks for Composting Facilities

- New Guideline

	Class 11 / 12	Class 13
Dwelling	300 m	300 m
Commercial / Industrial Buildings	300 m	150 m
Farms	100 m	50 m
Roads	50 m	30 m
Rivers / Streams	150 m	100 m
Lake	300 m	100 m
Well	300 m	150 m
Adjacent Property	50 m	30 m

# Composting Approvals

- Certificates of Approval
  - Water Quality Regulation
- Monitoring conditions
- CCME Guideline for Compost Quality
  - Finished Compost Quality
    - Class A: Unrestricted use
    - Class B: Some Restriction

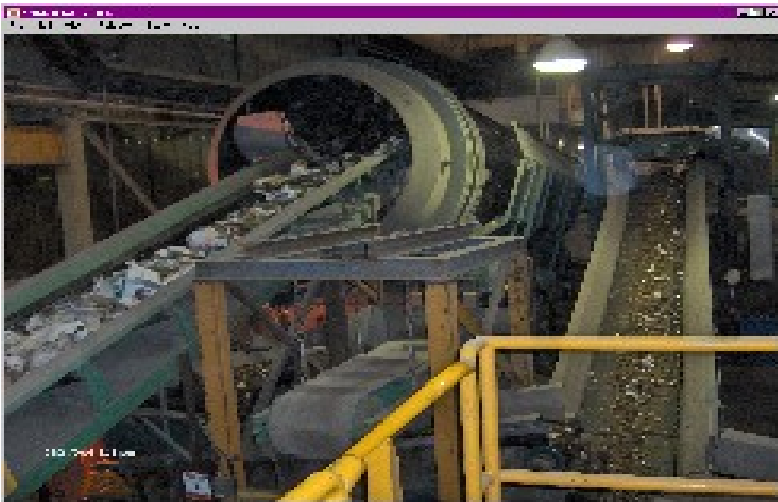
# Challenges for Composting Industry

- Obtaining feedstock
- Operational controls
  - Temperature
  - Moisture
  - Odour
- Awareness and confidence of consumers
- Large rural population

# Examples

## WASWC (Westmorland Albert Solid Waste Corporation)

Separating waste from feedstock



Finished product



# Example

**ENVIREM (Several sites across NB)**

**Feedstock & Turning**



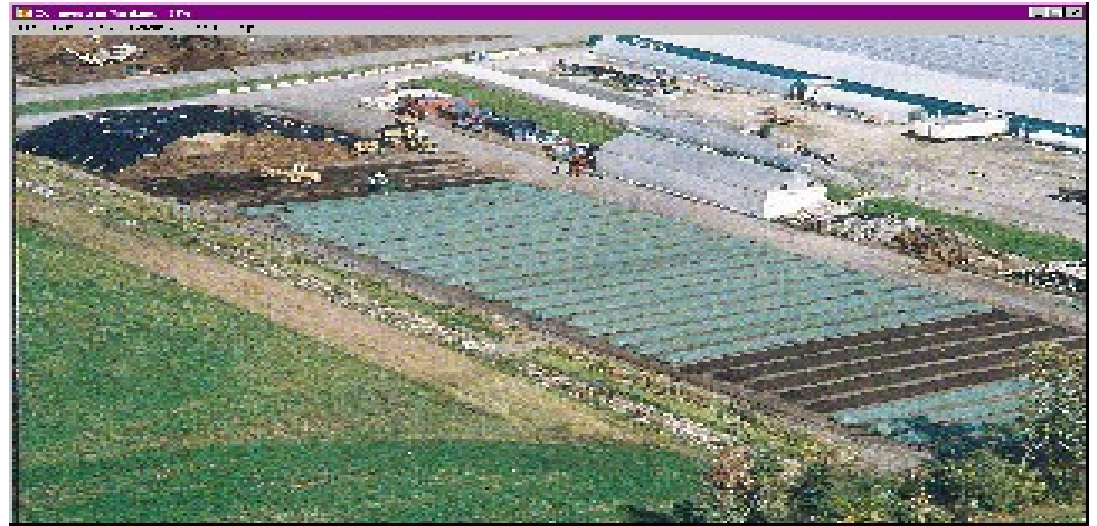
**Windrow operations**



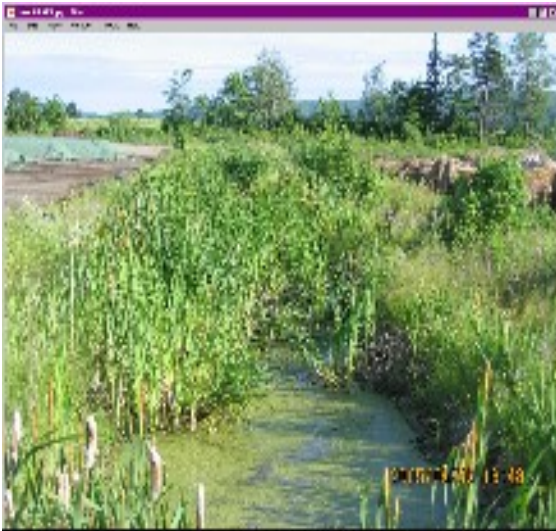
# Example

## JOLLY FARMER (Organic compost)

### Covered windrows



### Constructed wetland treating compost pad runoff



# Example

## GREATER MONCTON SEWERAGE COMMISSION

- Uncovered Windrow
- Gore Cover



# Example

## COBURN FARMS

- Compost turner



- In-vessel



# Summary

- Composting provides:
  - Waste diversion from landfills
  - Alternate to topsoil mining
  - Potential greenhouse gas savings
  - Employment opportunities
  - Cleaner environment



Jeff Porter, P.Eng.

Impact Management Branch

Department of Environment

(506) 453-7945

[jeffrey.porter@gnb.ca](mailto:jeffrey.porter@gnb.ca)