

CONTARINA SPA

Integrated waste management

Marco Mattiello
International Relations Manager

Lovadina di Spresiano
June 20, 2019



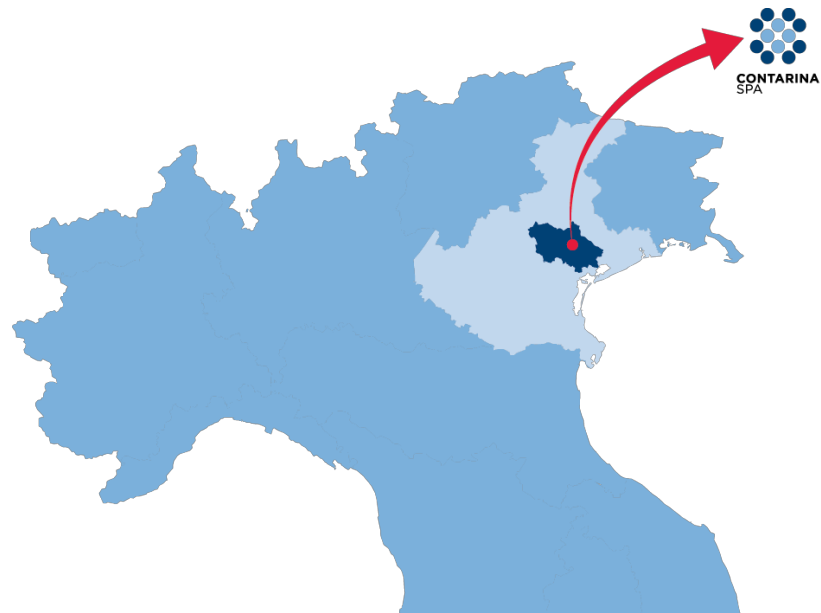
CONFIDENTIAL - NO COPYING OR DISTRIBUTION PERMITTED

Any unauthorized reproduction, disclosure, or distribution of copies by any person of any portion of this work may be a violation of copyright laws, could result in the awarding of damages for infringement, and may result in further civil and criminal penalties. All rights reserved. © 2018 Contarina S.p.A.

Our location

CONTARINA 100% Public Company

Square Kms	1.300
Municipalities	49
Inhabitants	~555.000
Users	~260.000
Employees	701
Annual turnover 2018	83,8 M. €



Historical centers



Urban and
suburban areas



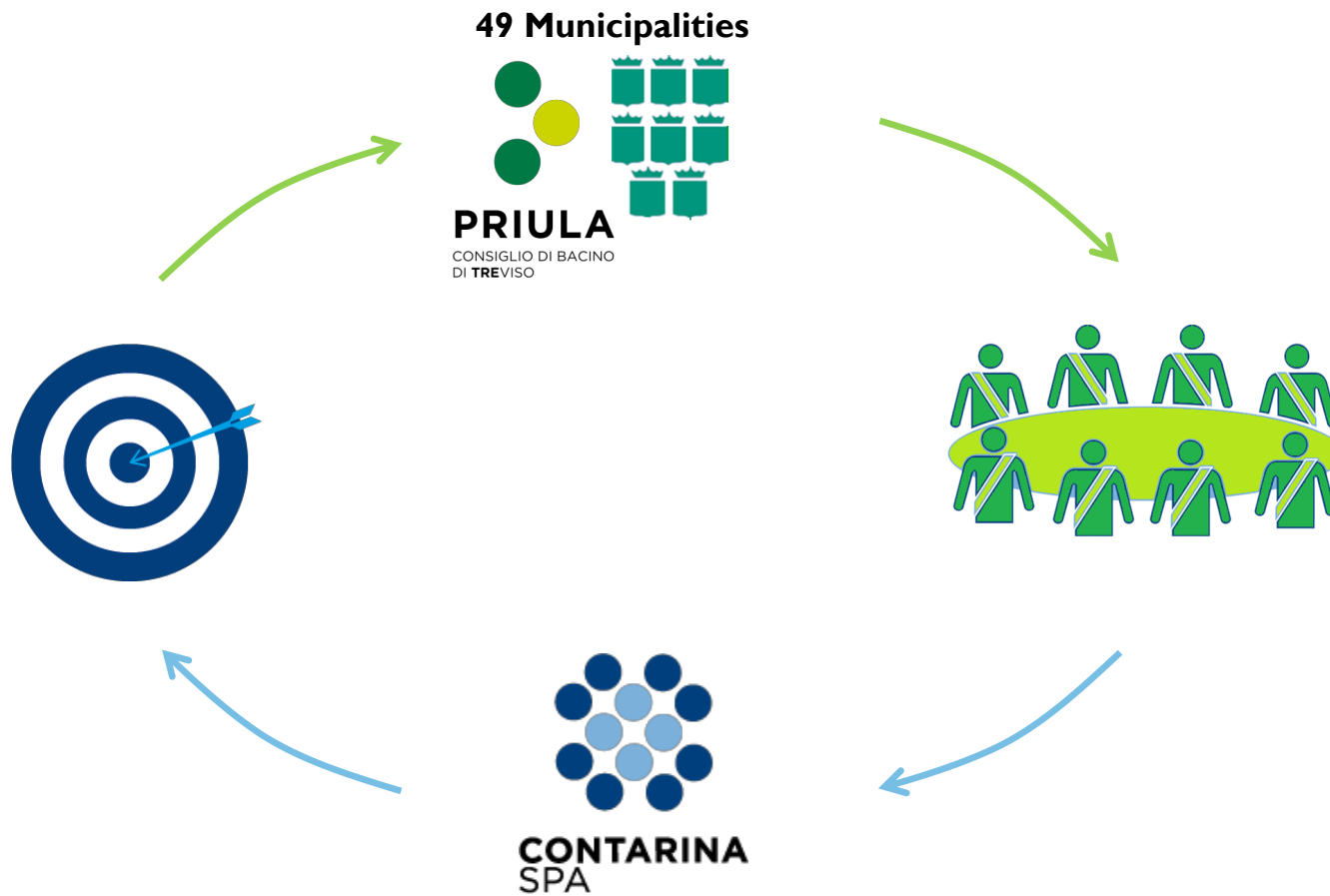
Rural areas



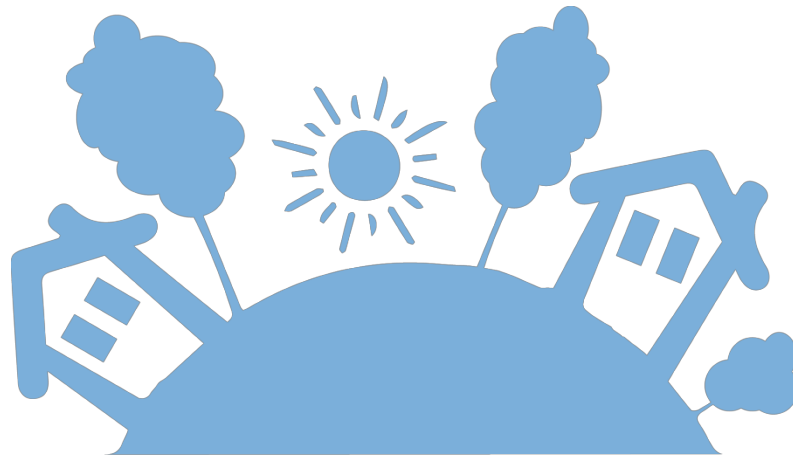
Remote areas



Shared objectives



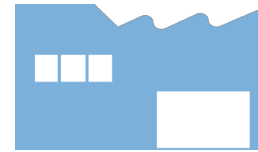
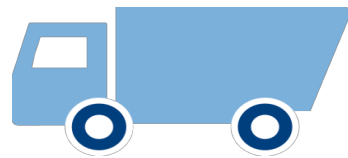
Contarina's territory



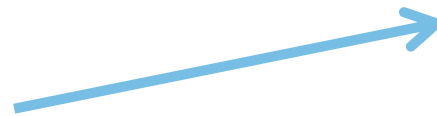
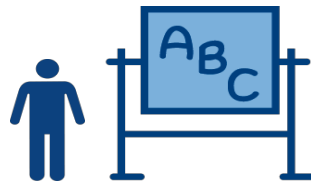
→ **No incinerators**

→ **No landfills**

We invest in the future



Lorries and plants



Citizens

Individual Awareness



EcoGiornale



EcoSportelli



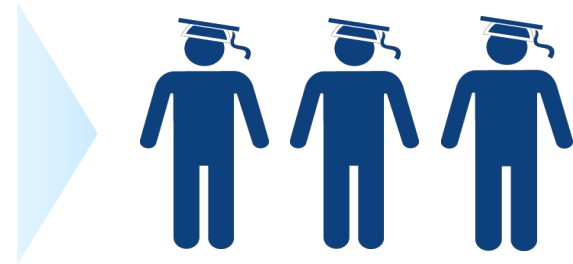
EcoCalendario



Open Days



School Education



Web site



Social media

Our philosophy

There is no more

~~**B 2 B**~~

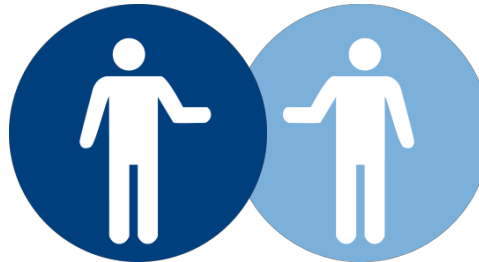


~~**B 2 C**~~



It's

H 2 H



Waste management system

Conceptual model

KNOWLEDGE



Information;
Education;
Communication

RESPONSIBILITY



OUTCOMES



Fee, Quantity,
Outcomes, Evaluation

ACTION



Single

Waste separation at
home;
Curbside collection.

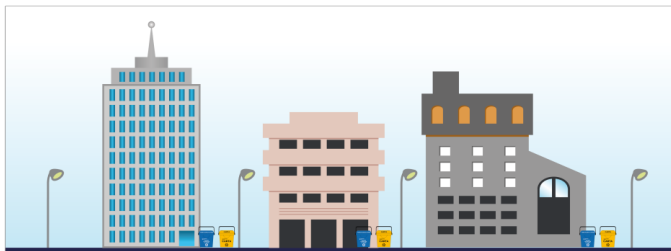
Collective

Waste transport;
Waste treatment.

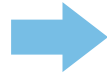
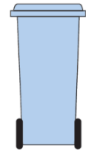


Curbside collection

A flexible system



PAYT Fee



Residual waste

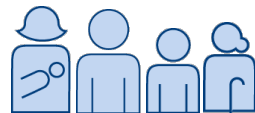
Measurement and transmission of data

Fee

60%

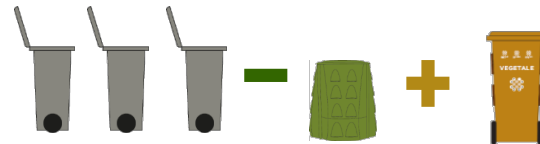
40%

Fixed Fee



Based on the number of household members

Variable Fee



Based on the number of residual waste bin removals
 – 30% for home composting
 Based on the number of yard waste bin removals

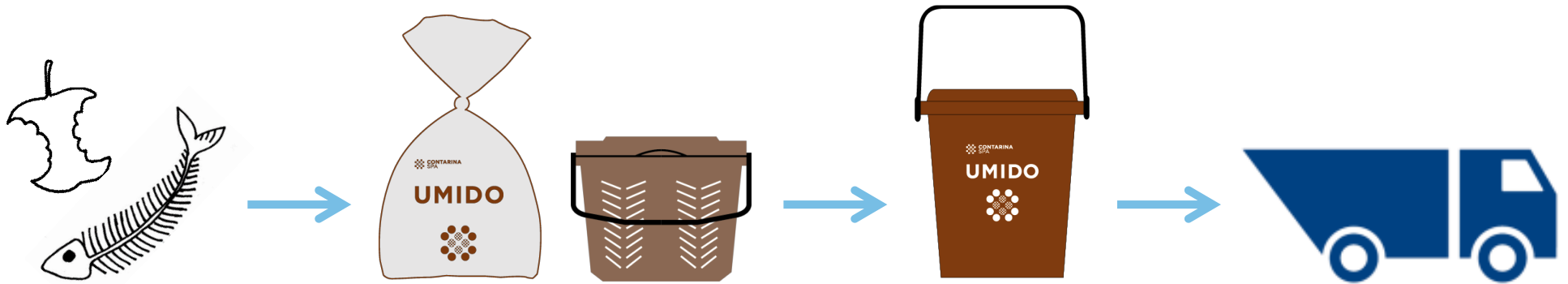
DOMESTIC
USERS

Recycling and Treatment

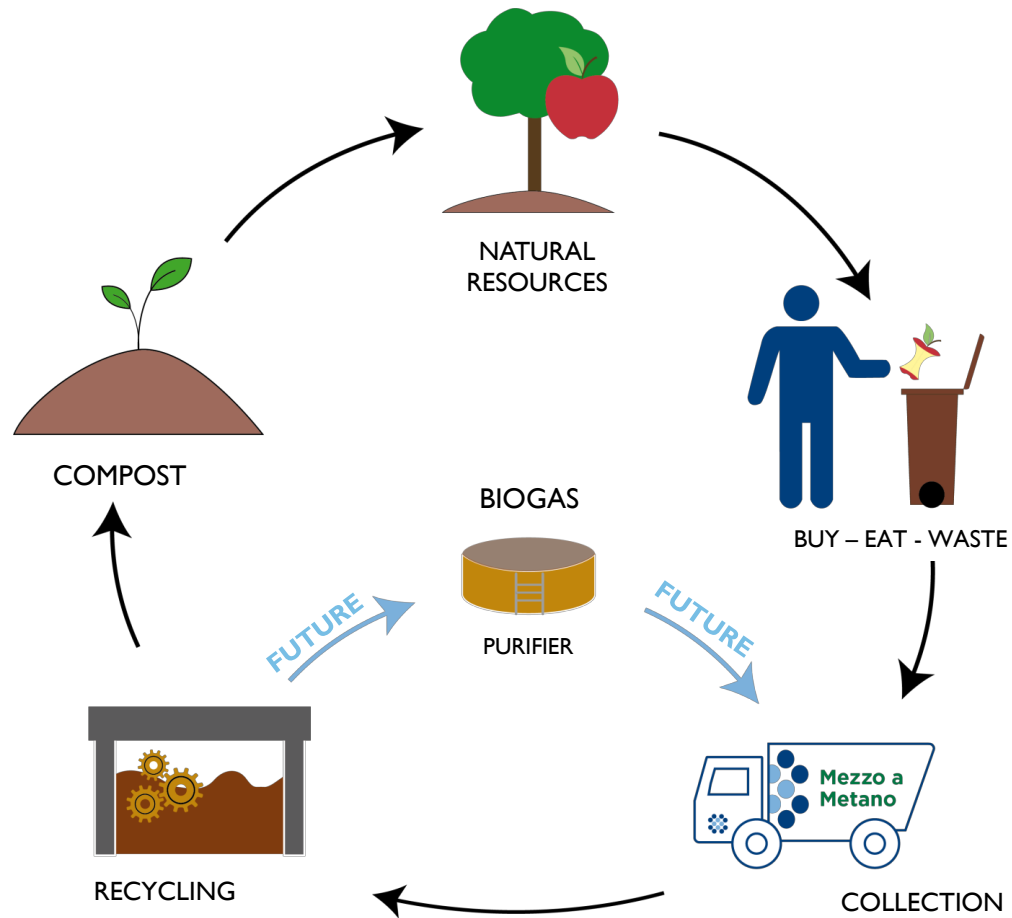


SOURCE
Contarina 2018

Organic and yard waste



Bio and yard waste



Main features of the new composting plant

- Complete autonomous treatment of organic waste;
- Higher enhancement of waste collected;
- Total investment: 21.400.000 Euros.

Organic and yard waste treated: 73.000 ton/year (45.000 ton of organic waste and 28.000 ton of yard waste).

Compost production: 26.800 ton/year.



Main features of the new composting plant

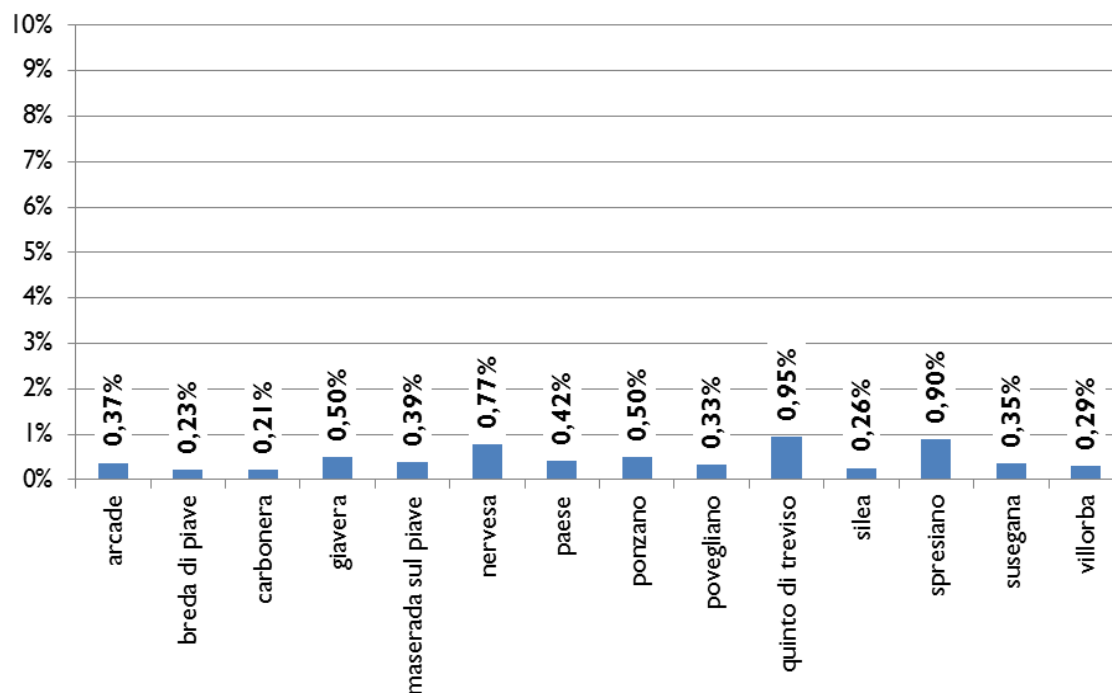
- Mitigation in environmental impact thanks to a significant reduction of CO₂ and odours emission;
- Improvement of composting process.





UMIDO

Content of impurities



Pre-selection Plant Recyclables Waste

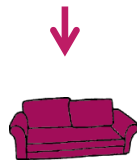
Paper and Textile



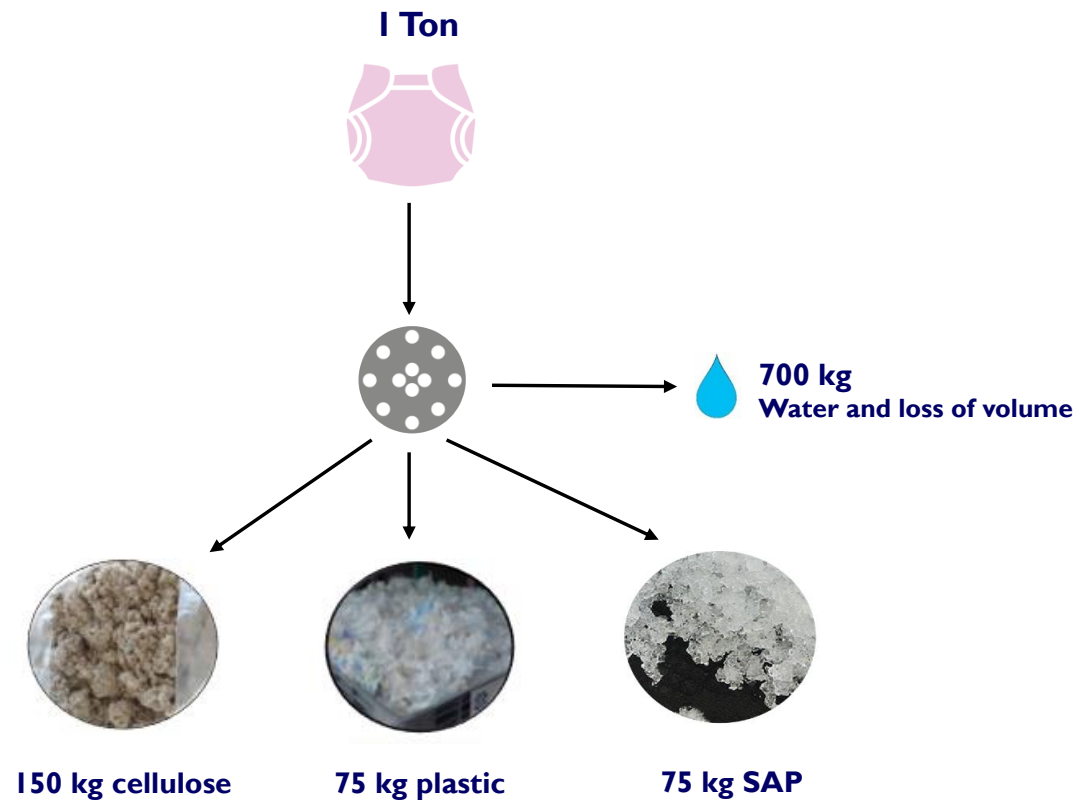
Glass, Plastic,
Cans



Bulky Waste



Absorbent Hygiene Products Recycling Plant





EcoBus

Service created for the historical center of Treviso

- 6 different routes
- It stops for 30 minutes at fixed times
- It collects two different types of waste at the same time
- Users deliver the waste to the EcoBus



EcoStop

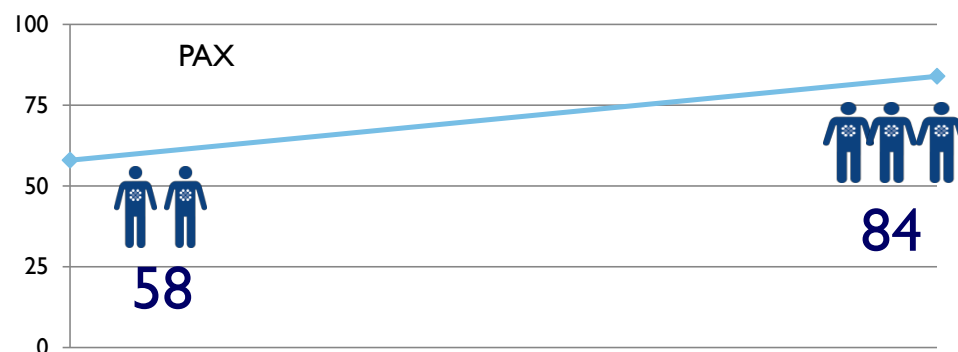
Service created for the historical center of Treviso

- 2 different routes
- It stops for 1 hour at fixed times
- It collects 4 different types of waste at the same time
- Users deliver the waste to the EcoStop

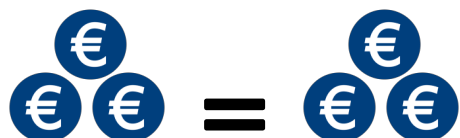


'Green jobs' means growth

Contarina Staff



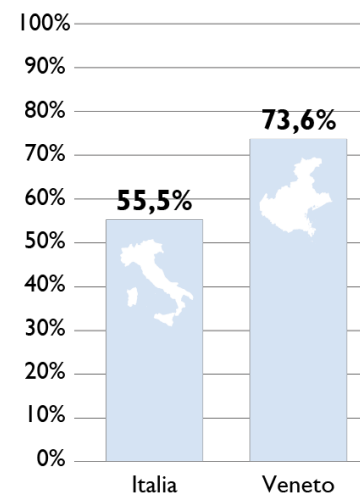
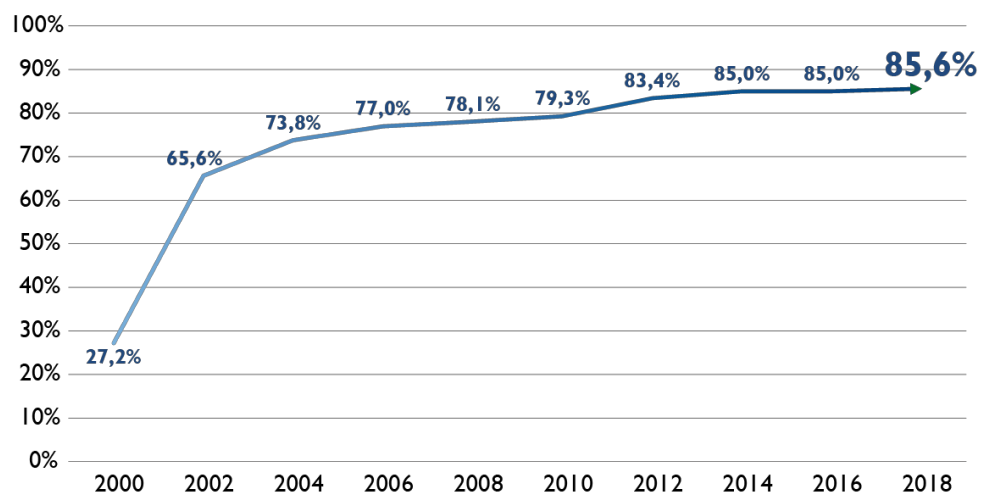
Total costs
(management + disposal)



Waste quality



Recycling Rate of the municipalities managed by Contarina

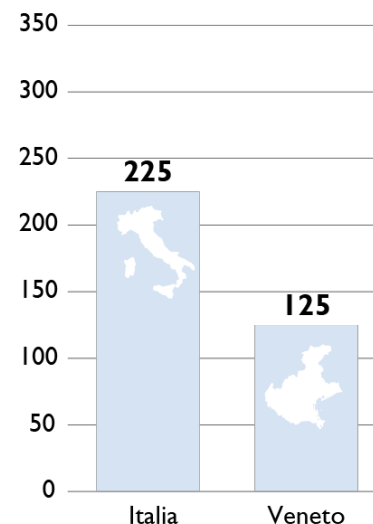
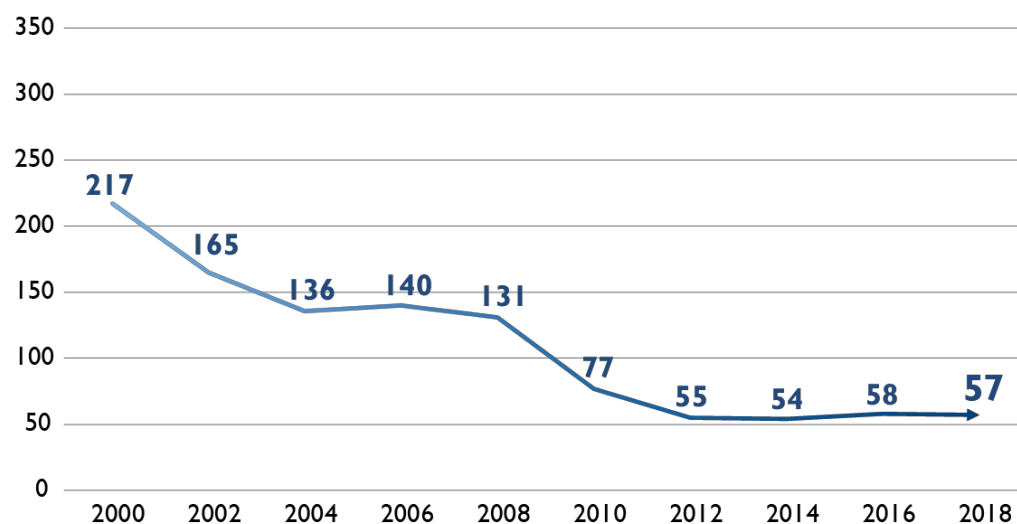


SOURCE

Contarina 2018

Rapporto Rifiuti ISPRA 2018 (dati 2017)

The production of municipal residual and bulky waste managed by Contarina (kg*inhabitant/year)



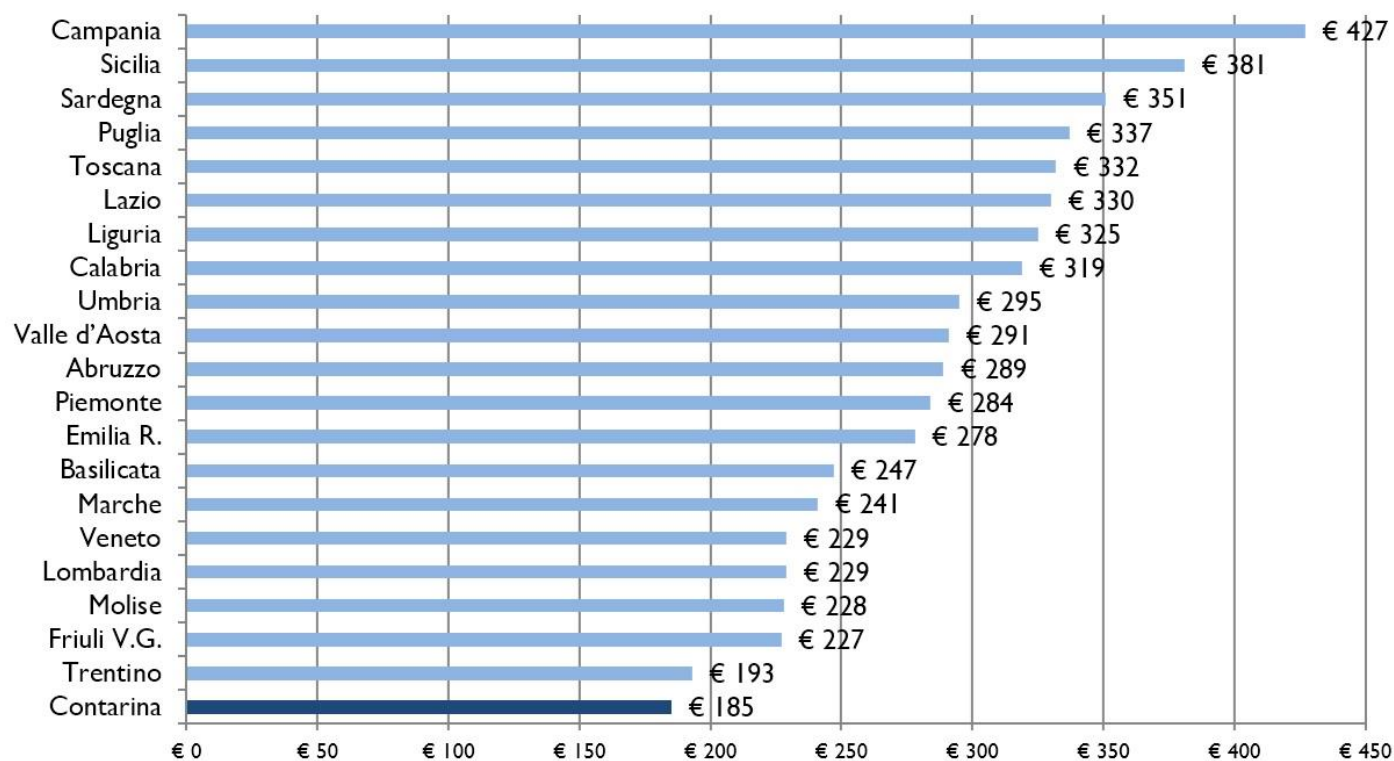
SOURCE

Contarina 2018

Rapporto Rifiuti ISPRA 2018 (dati 2017)

The average household's fee*

Comparison of national data (2016)



*Average household composition: 3 person

SOURCE

Dati Contarina 2017 Cittadinanzattiva - Osservatorio prezzi e tariffe 2016 (Importi comprensivi di IVA e tributo provinciale)

Thank you for your attention



ContarinaSpa



@contarinaspa



ContarinaSpA



www.contarina.it

comunicazione@contarina.it



Current Situation in Italy, France, Ireland, UK, NYC

Christian Garaffa Novamont Italy:

- Collections in Italy continue regularly. Organics, Recycling, Trash
- Quarantined Residents must place all 3 bags in one. Good Citizenry.
- Organics Volumes have decreased slightly because of restaurant and office closings
- Majority of collections are residential so impact is not major
- Yard Waste has decreased more significantly
- Drop off sites are closed and commercial landscaping has stopped
- Milan had a large decrease 29% in organics collections, city with many commercial restaurants
- Plastic recycling collection is down 14%. Perhaps, long term purchasing is larger packing, less SUP
- Same could be said of the decrease in Organics. More processed food for long term.
- Composters remain open – majority of customers are farmers, retail operation (small) stopped



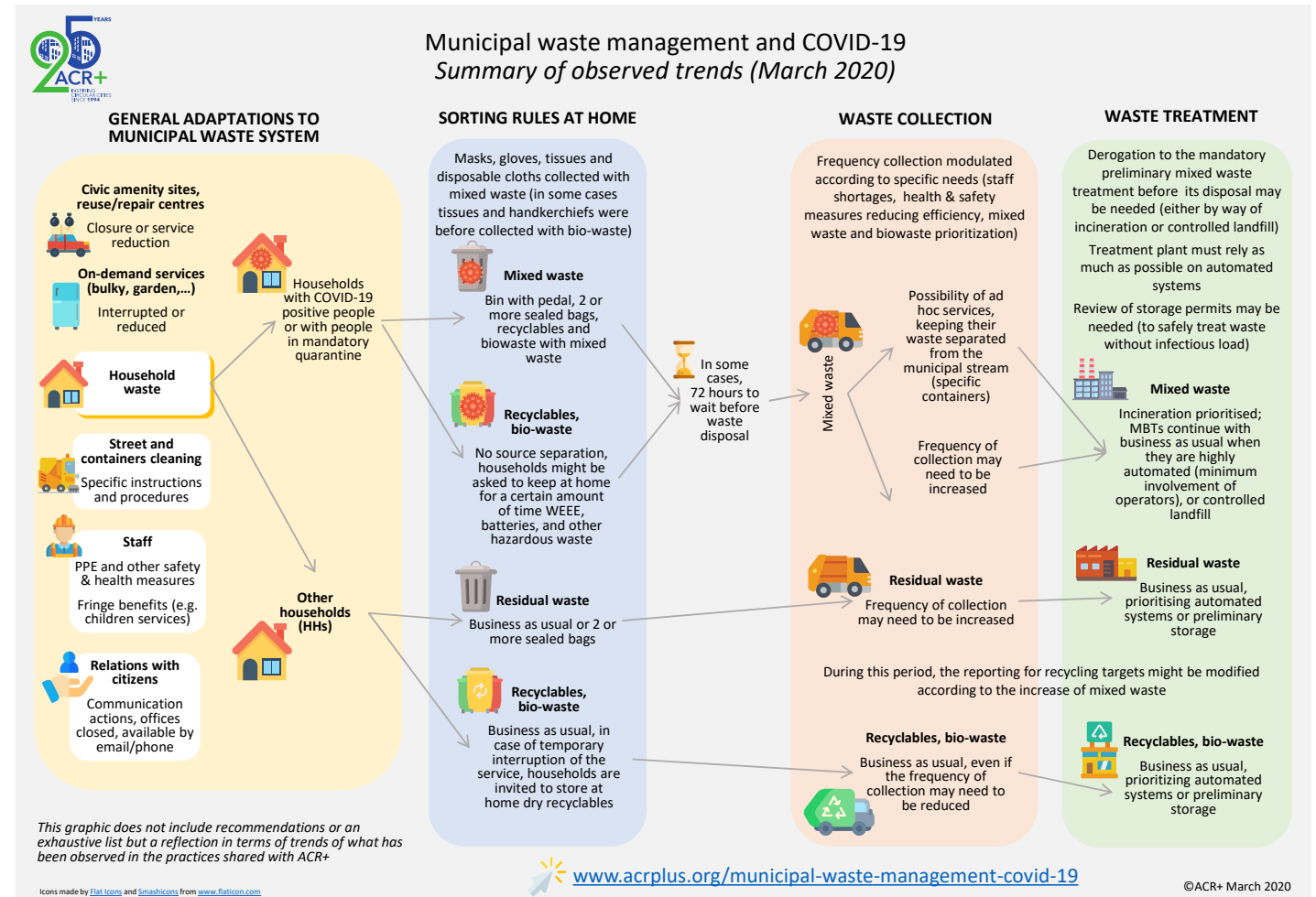
Current Situation in Italy, France, Ireland, UK, NYC

Simona Leroux Novamont France:

- Collections in France continues as usual. Where there is a one man crew with tipping arm
- Outside of the city, where manual 3 man crews are used it depends on local legislation
- Garden Waste pick-up is suspended, this time of year, in city not major impact
 - Residence are asked to build a pile on their property
- Many composters are closing do to lack of garden waste
- Drop off sites are closed and commercial landscaping has decreased
- Organics – Food Scrap- collections continue, even if they are landfilled
 - At this point it is decided too difficult to restart the program if it were to stop
- Recycling sites are open, but if the centers close collection will stop also
- If situation is long term, policies will change.

Simona Leroux Novamont France:

- Quarantined Residents must place all 3 bags in one container
- They should wait 72 hours before putting out collections
- All goes to Incineration



Ireland and UK:

- Concern for workers at sites and pick-up Crews
- CRE Survey for emergency plans done
- Contingency plans
 - From no changes
 - To stop all collections
- Health Survey for Composters
 - Worker readiness
 - Cleaning protocol equipment
 - Covers all aspects with plans

WISH Waste Industry Safety and Health Forum INFORMATION DOCUMENT

COVID-19 AND WASTE MANAGEMENT ACTIVITIES

This information document was produced 2 April 2020 and is based on HM Government advice, industry experience and current knowledge, all of which may change. You should first always follow the latest HM Government advice (<https://www.gov.uk/coronavirus>). HM Government activity on COVID-19 is being led by the Department of Health and Social Care and PHE (Public Health England) in conjunction with the devolved administrations.

*Please note that it is **NOT** the intent of this information sheet to provide a general and comprehensive 'one-stop-shop' for advice on COVID-19. The emphasis here is on waste management specific issues. You should also read and understand the freely available HM Government and other advice (such as at the above web address, the further information given in section 6 and the links throughout this document) and use these in conjunction with this document.*

This is a 'live' document and may be updated and revised as further information is released and as the issue develops. If you have a comment on this document please send it to info@wishforum.org.uk.

Tip – advice, guidance and resources on COVID-19 are available from various sources, including graphics on how to wash your hands, symptoms and similar. These are generally free to download and use. Use this type of resource as posters, hand-outs for employees and similar to reinforce issues such as good hygiene.

COVID 19 - PRIMARY WASTE ACTIVITY NO. 4 - WASTE COLLECTION STRATEGY

The following risks to waste collection have been identified:

Risk	Description	Responsibility
Primary Risk	Availability of human resources to maintain normal operations.	Permitted waste collectors
Secondary Risk	Capacity of the sector to cover a collectors list in the event of interruption.	Permitted waste collectors
Tertiary Risk	Outlets for rMSW, MDR, and Food Waste which are dealt with under Disposal recovery and export risk.	Permitted waste collectors, Authorised Facility Operators and Exporters

The RWMO's propose three levels to the response as follows:

Level	Response	Measures
Level 1	Mitigation Measures	Immediate measures to mitigate the risks identified.
Level 2	Post Mitigation Measures	Additional Measures where mitigation measures are not sustainable
Level 3	Contingency Measures	Further Measures where mitigation and post mitigation measures are threatened.

LEVEL 1 - MITIGATION MEASURES

1	Business Continuity	The NWCPO have requested Business Continuity Plans from all 55 Permitted Household Collectors. Continuity measures include, truck allocation, segregated parking, segregated canteens, briefings by phone, staggered start times, cab sanitisation, back office segregation, maintenance team segregation, operations manager segregation, skip and commercial drivers allocated to commercial routes. Industry sources have indicated that normal service can be maintained with up to a 50% reduction in resources. <u>Collection time restrictions have been removed by the NWCPO on a temporary basis.</u>
2	Top 20 Collectors Coordination (Representing >90% Households)	The top 20 collectors, T20, nationally are coordinating their activities weekly. The T20 have agreed that they will share resources if required, in the event that one collector is disproportionately affected.
3	Civic Amenity Sites	Agreed Messaging: Civic Amenity Sites are a key component of household waste management in Ireland. Customers are encouraged to use Civic Amenity Sites in accordance with HSE guidelines on social distancing. Customers should only use Civic Amenity Sites for essential requirements at this time to ensure that the sites can remain open and functioning effectively.

NYC and NE:

- NYC drop-off sites suspended
- Could be good for Curbside? – right now future OK
- NERC – Northeast Recycling Council
 - Webinar on Community Composting Part 2
 - Best Practices Health & Safety
 - People Proximity – Staffing, drop offs
 - Staggered times
 - Use certified compostable bags
 - Higher Carbon in Recipes



Health & Safety Recommendations

- Close or limit the number of people onsite at any one time
- There may be changes in volunteer/staff availability - make a plan!
- Consider changes to your collection/drop off procedures
 - Staggering drop-off times
 - Have people put their scraps directly in the system (training!)
 - Use certified compostable bags
 - Always have plenty of high C materials
- Practice social distancing (6+ feet away from others)
 - Mark 6-foot distances around drop-off or other compost system areas
 - No handshaking or hugging for greetings